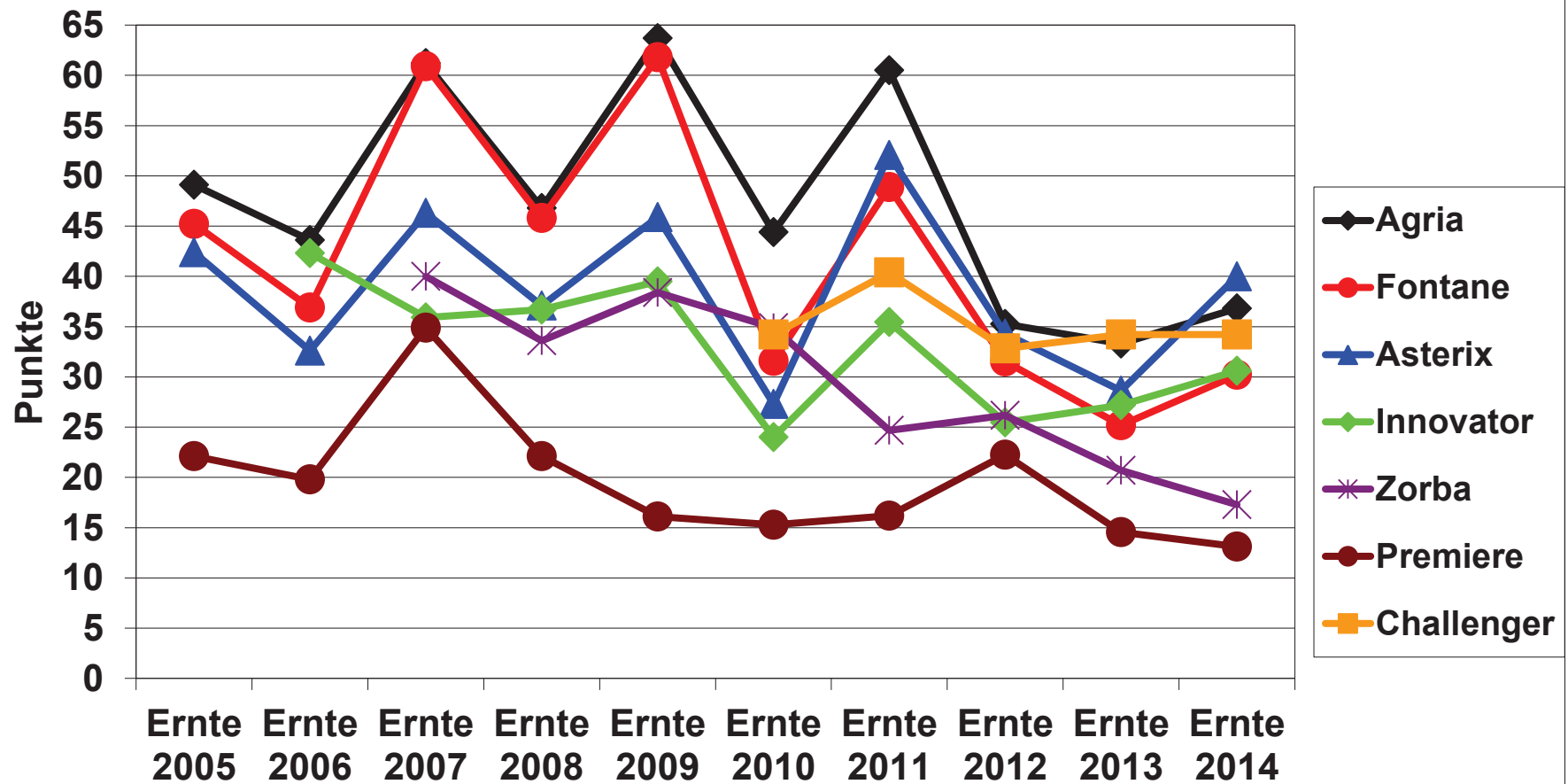

Qualitätsbonituren bei Pommes-frites-Kartoffeln

24. Februar 2015, Laimering

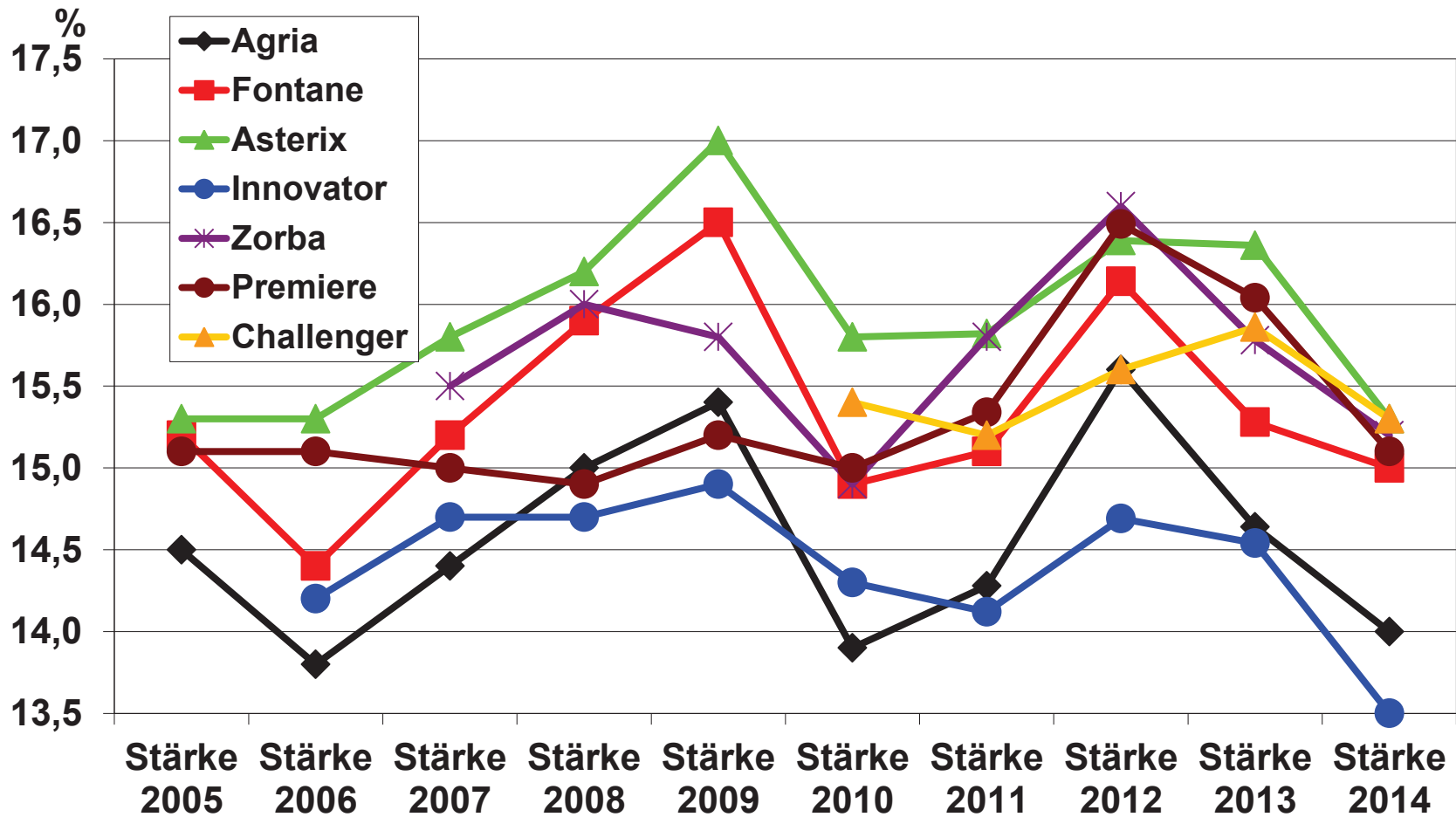
CKA II - Eingang

Gesamtmängel Ernte 2005 bis Ernte 2014 bis Dez



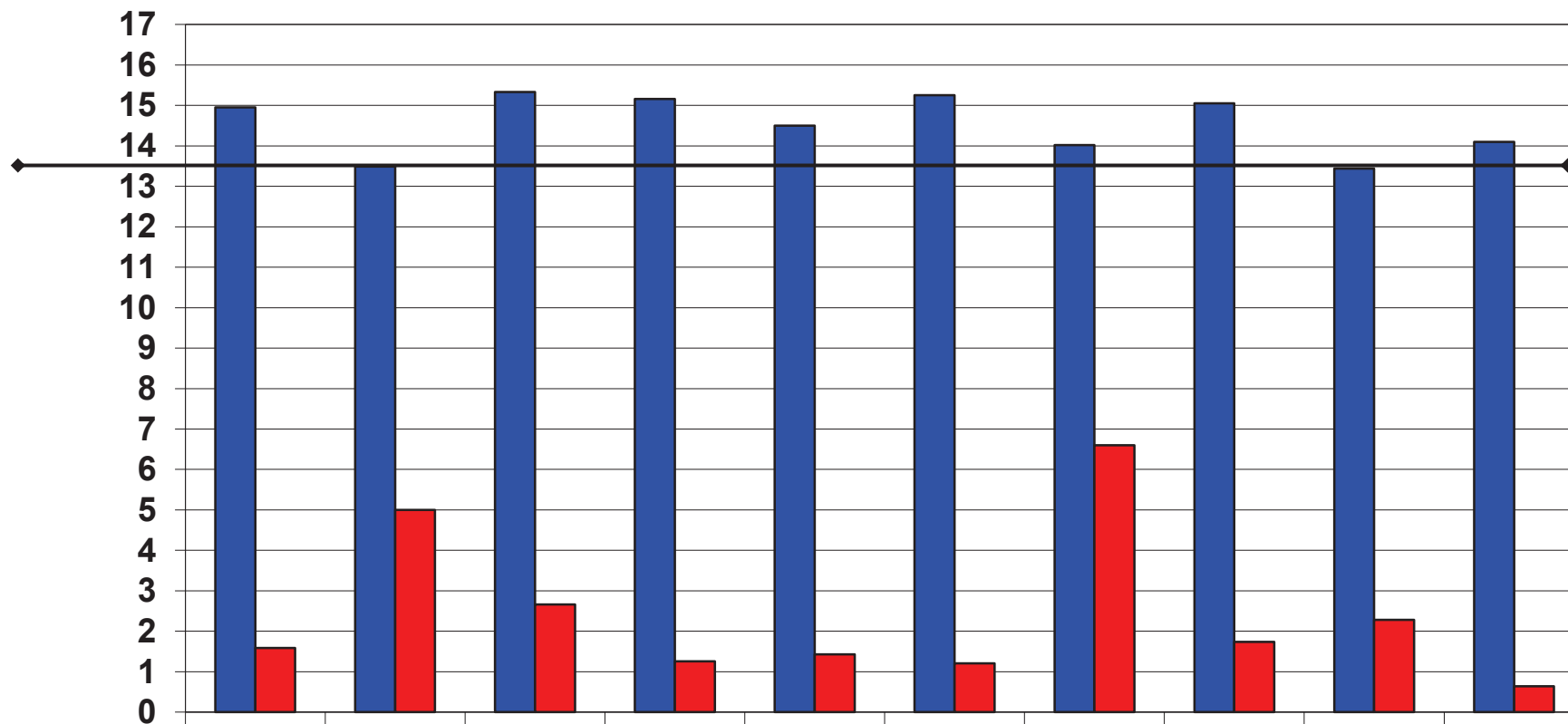
CKA II - Eingang

7 Sorten Stärke in % Ernte 2005 bis Ernte 2014

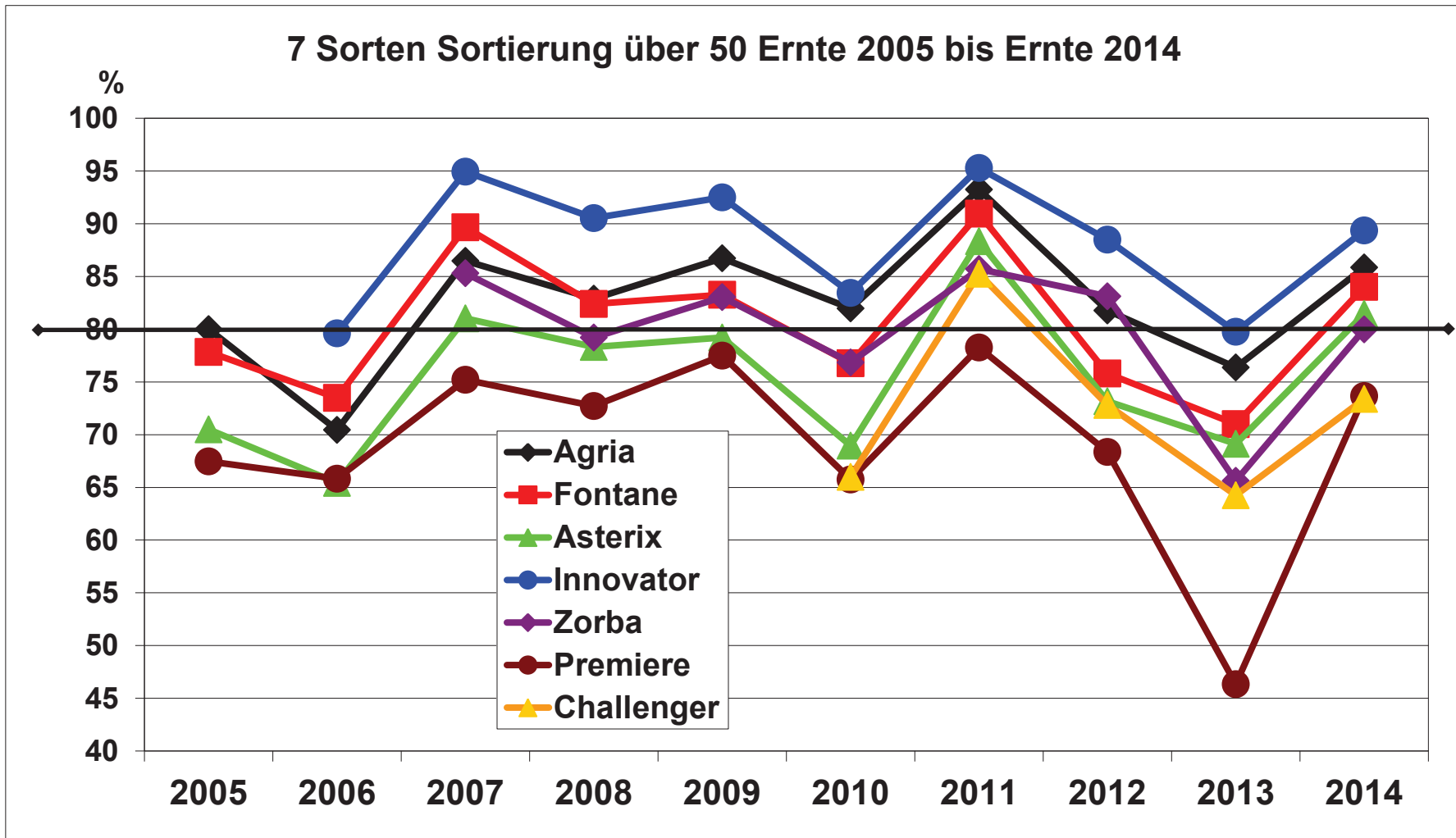


CKA II - Eingang

Ernte 2014 bis Dez. Stärke und Stärkearme Knollen in %

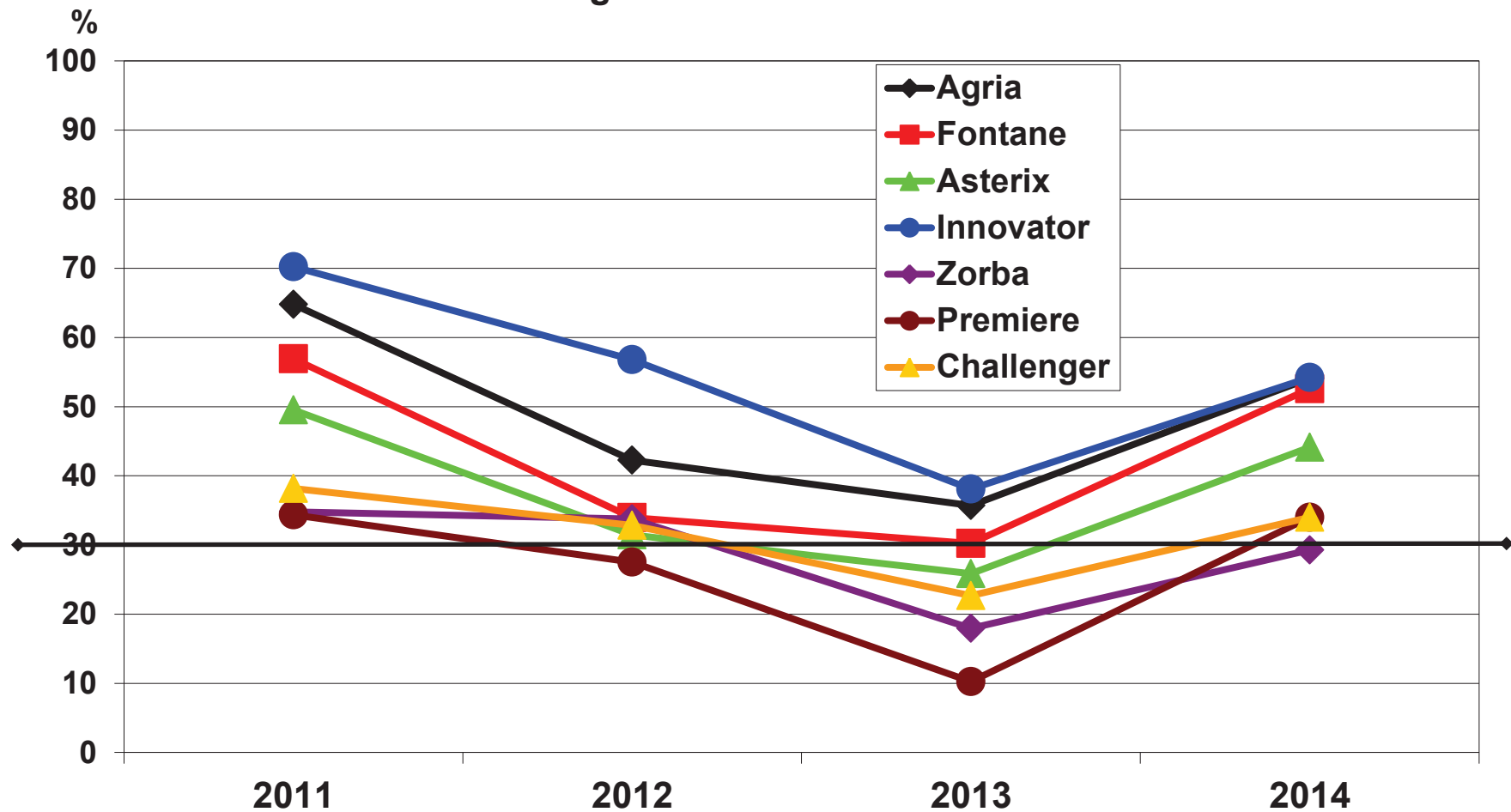


CKA II - Eingang

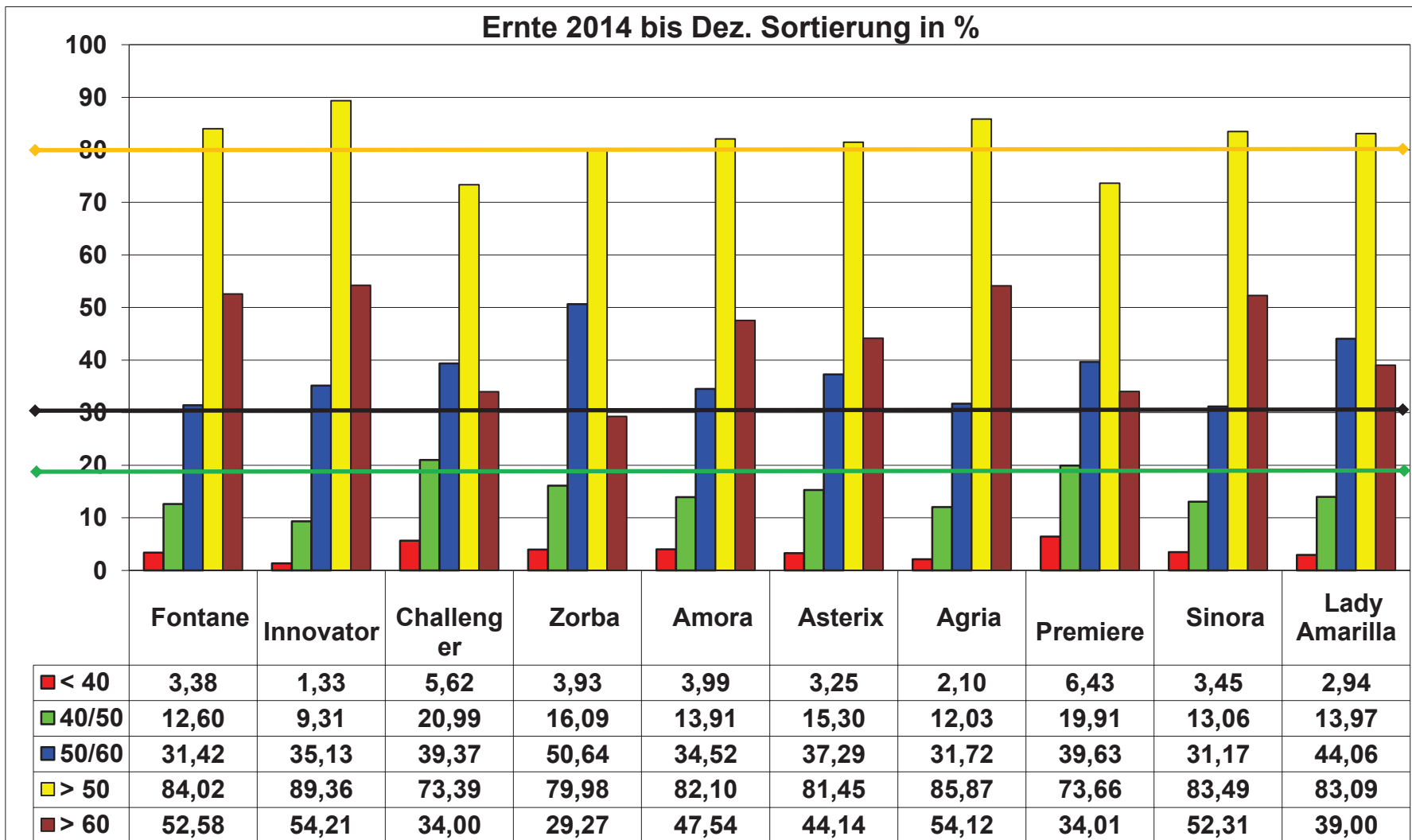


CKA II - Eingang

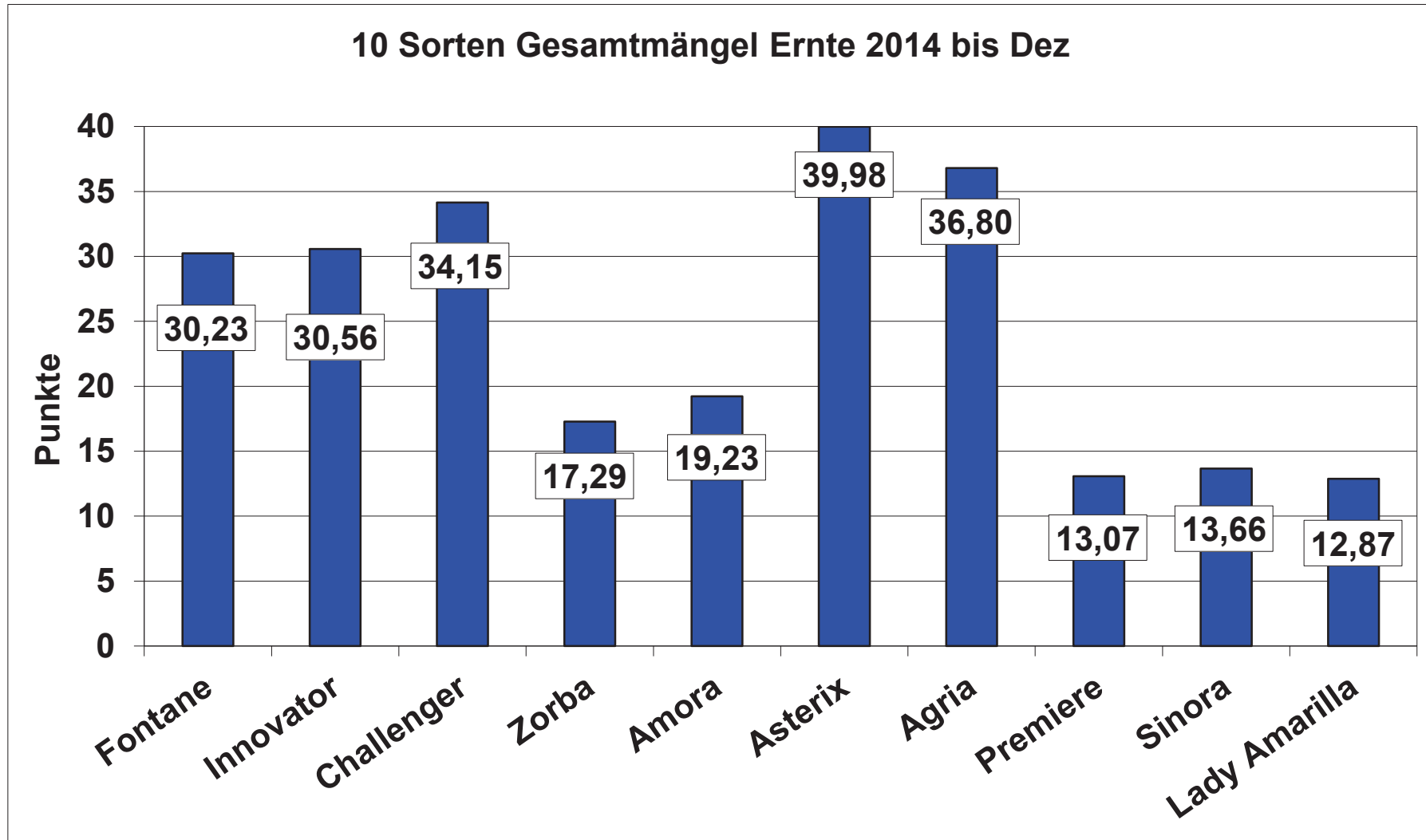
7 Sorten Sortierung über 60 Ernte 2011 bis Ernte 2014



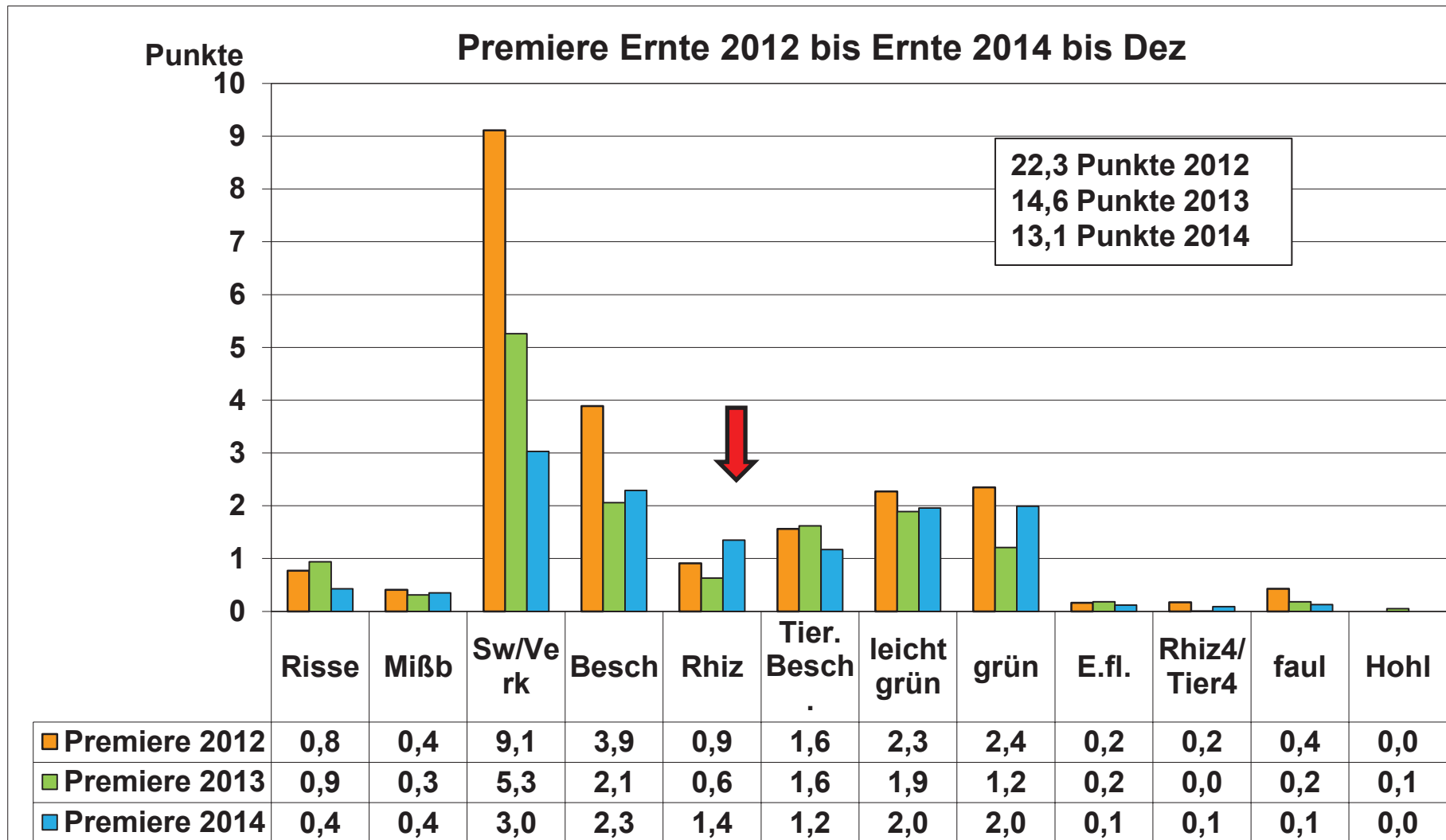
CKA II - Eingang



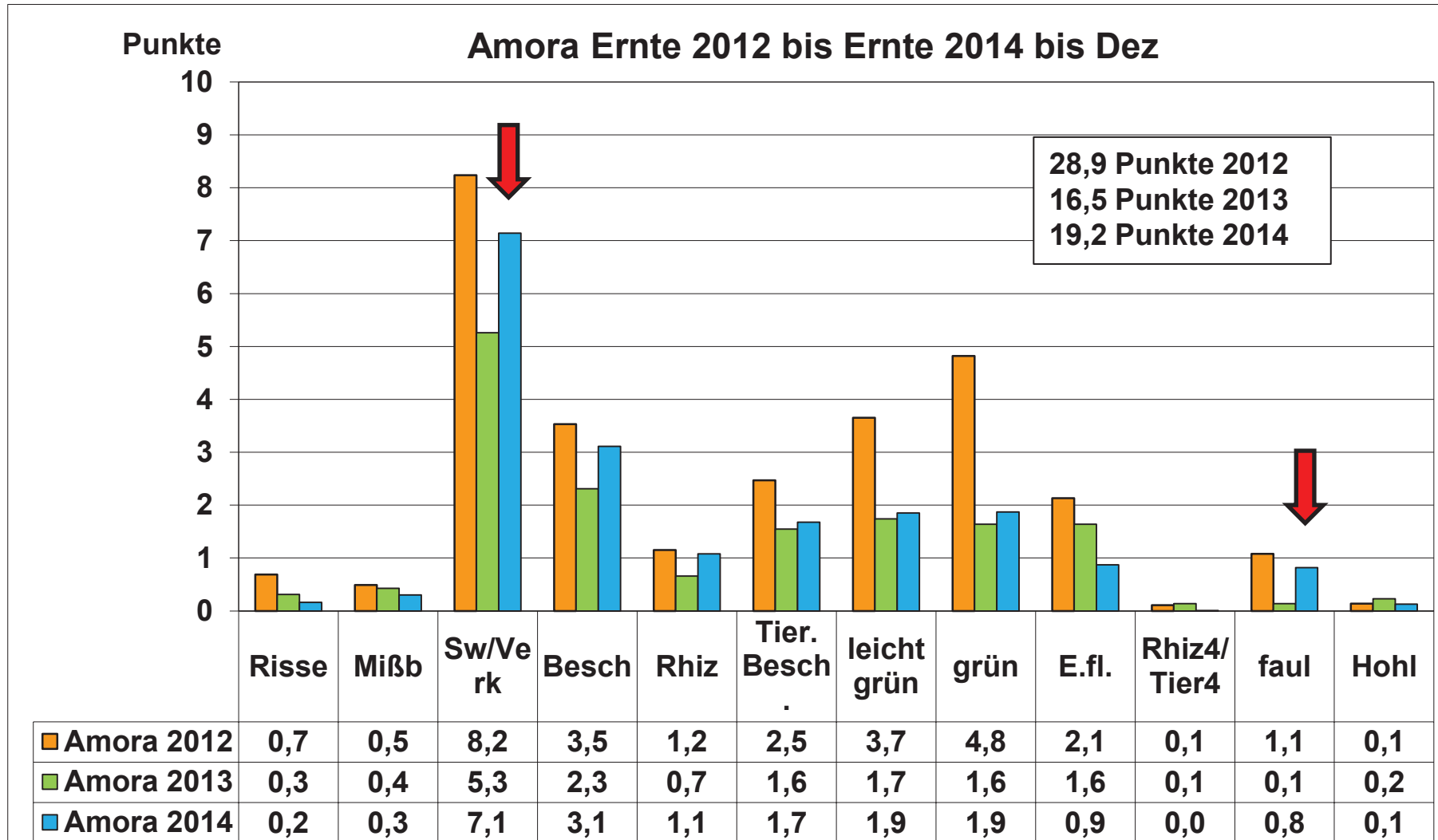
CKA II - Eingang



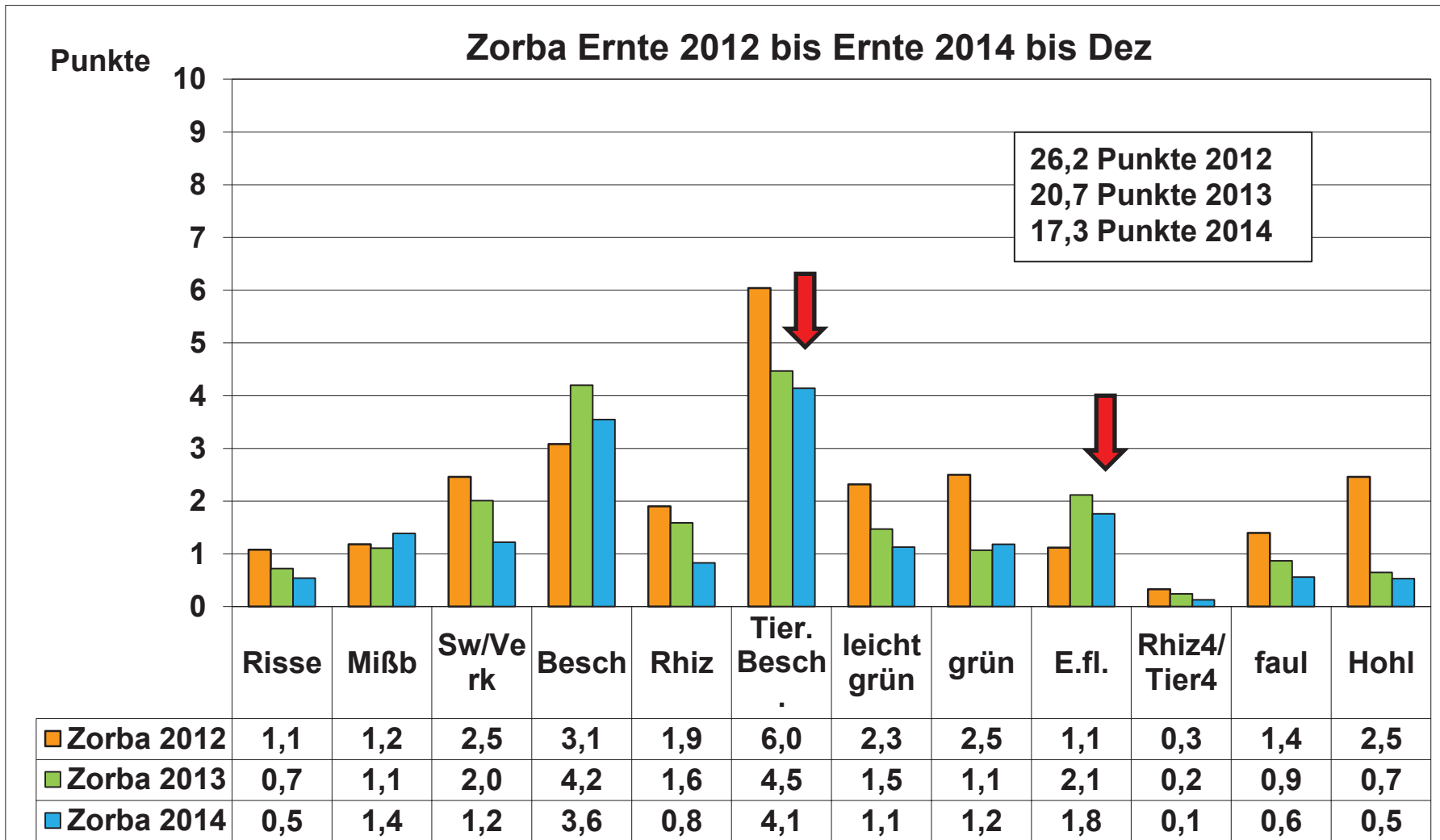
CKA II - Eingang



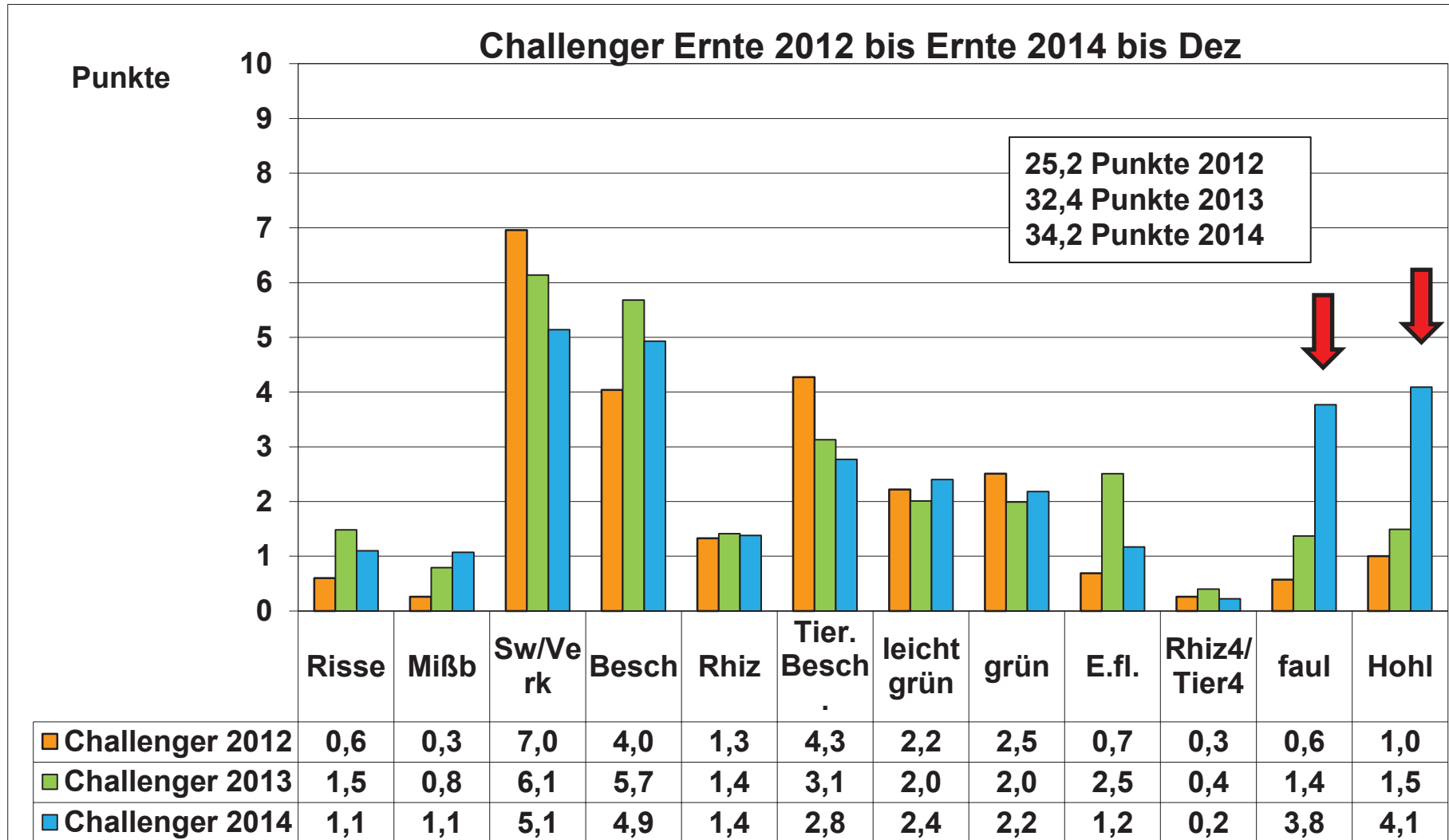
CKA II - Eingang



CKA II - Eingang

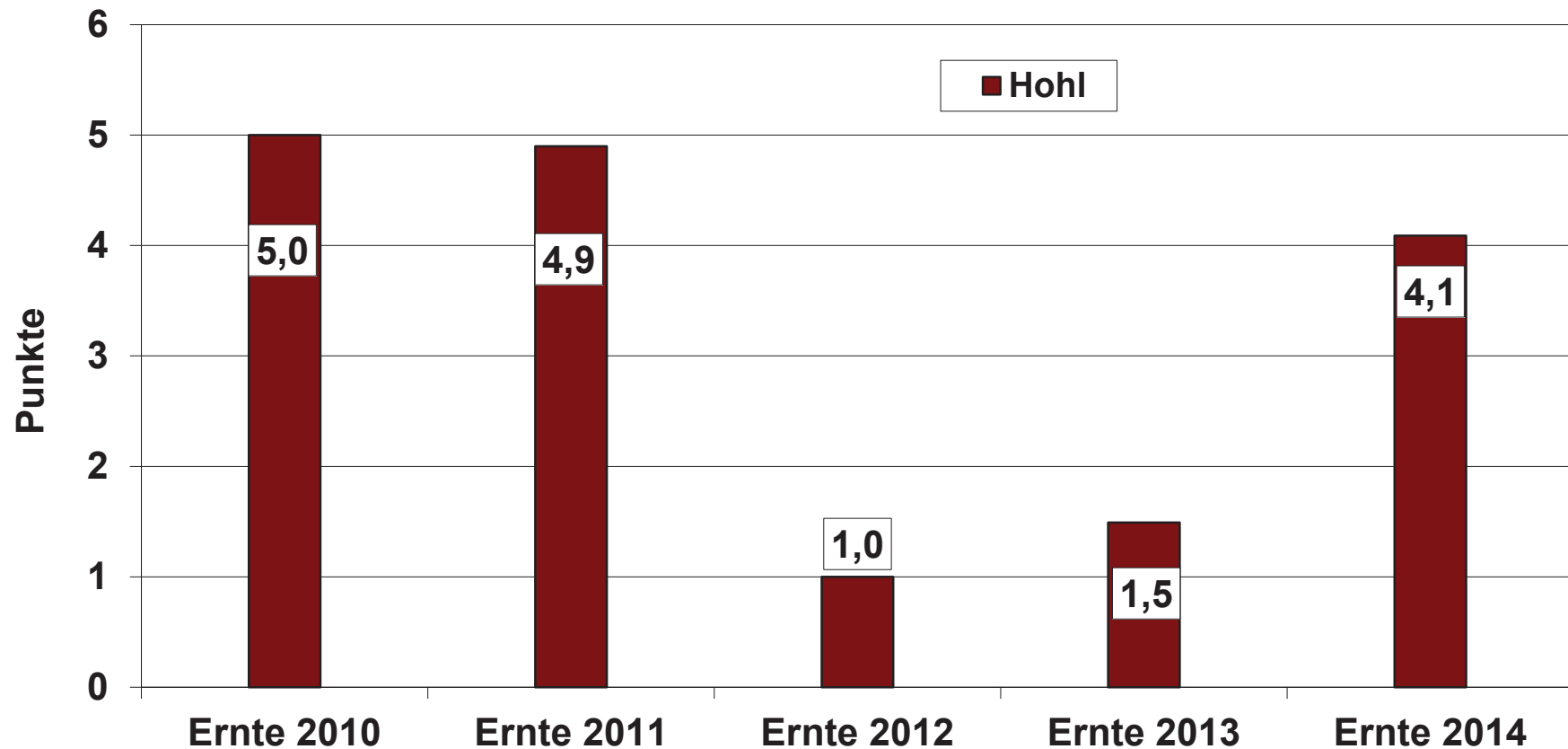


CKA II - Eingang

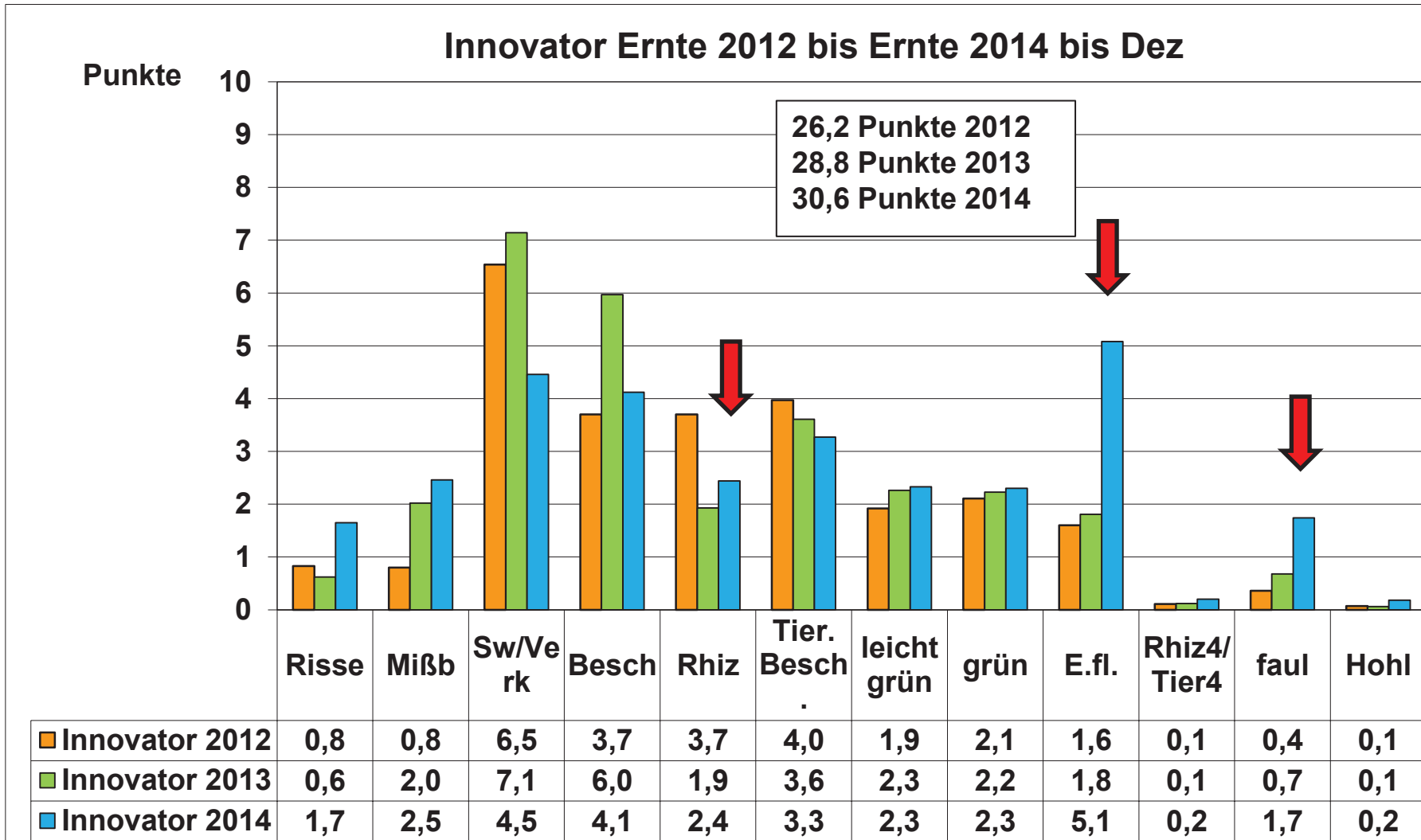


CKA II - Eingang

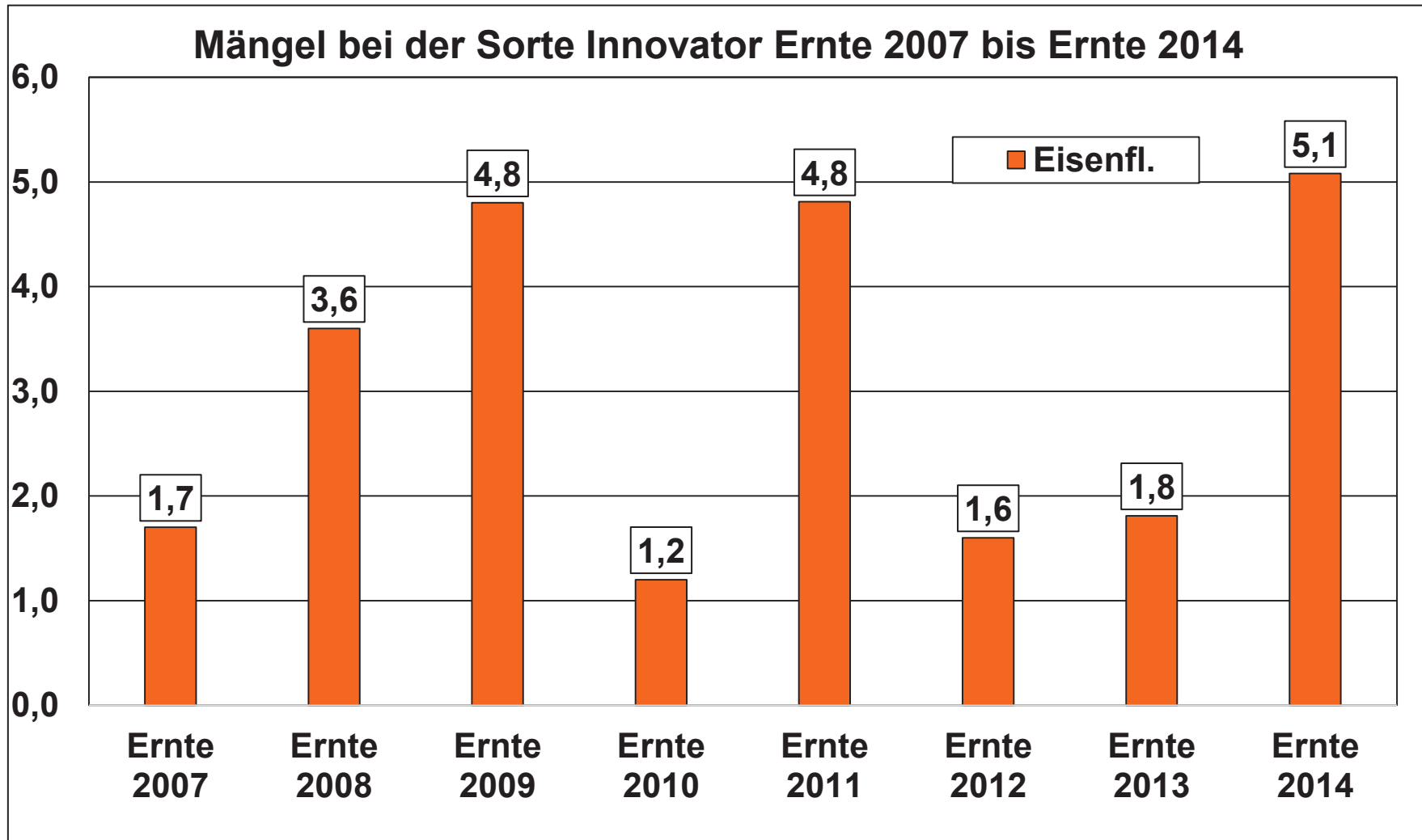
Mängel bei der Sorte Challenger Ernte 2010 bis Ernte 2014



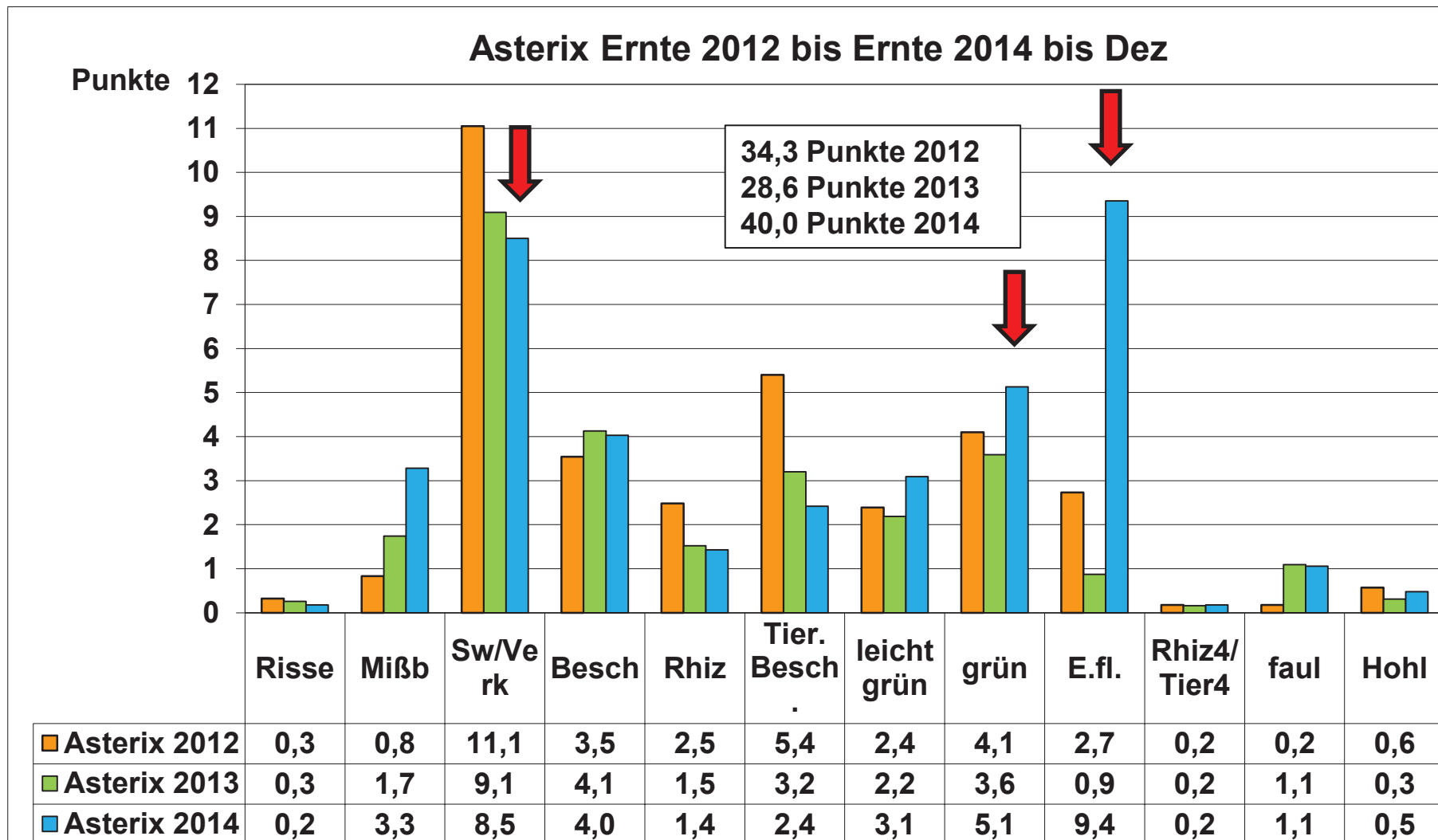
CKA II - Eingang



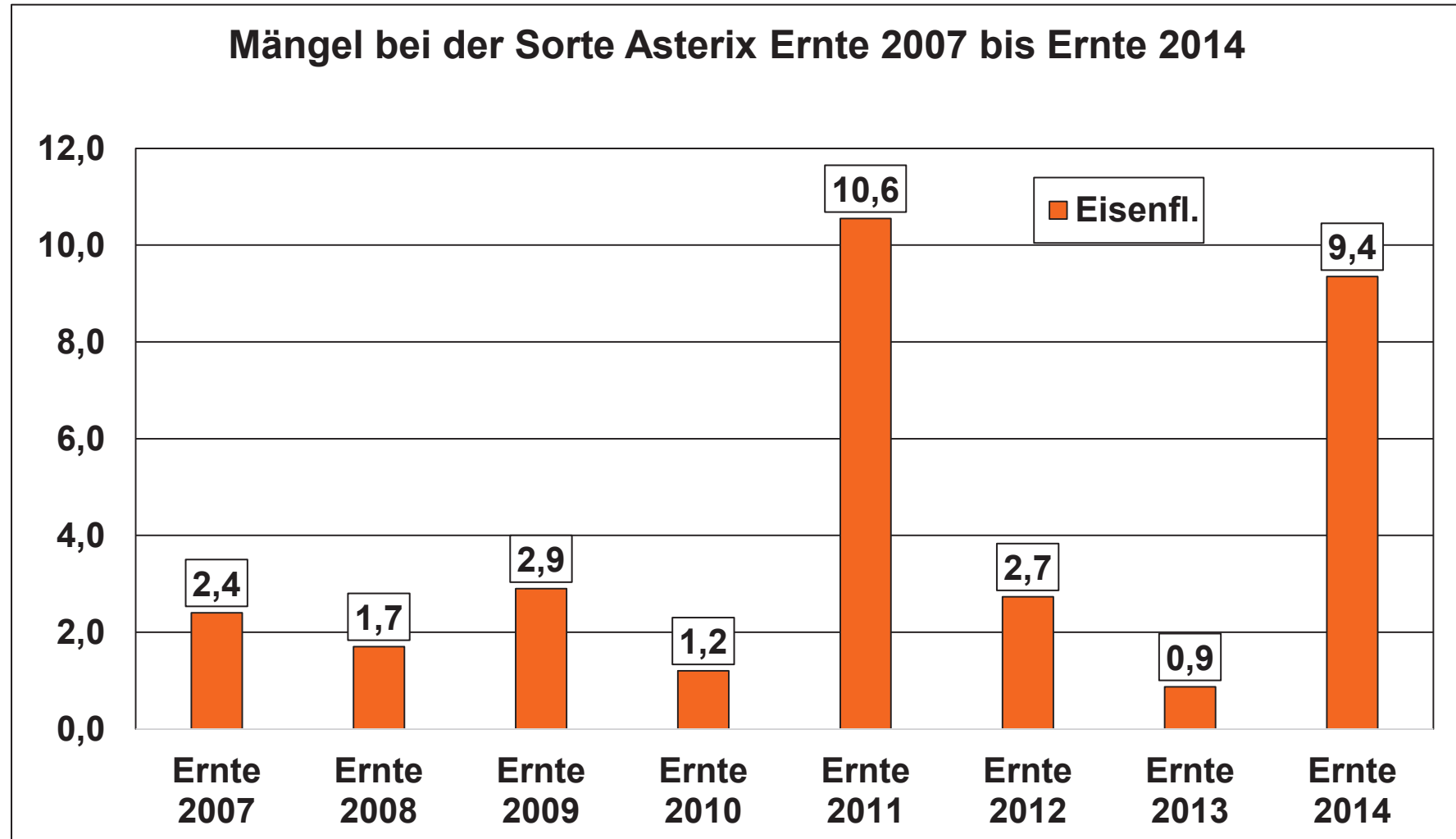
CKA II - Eingang



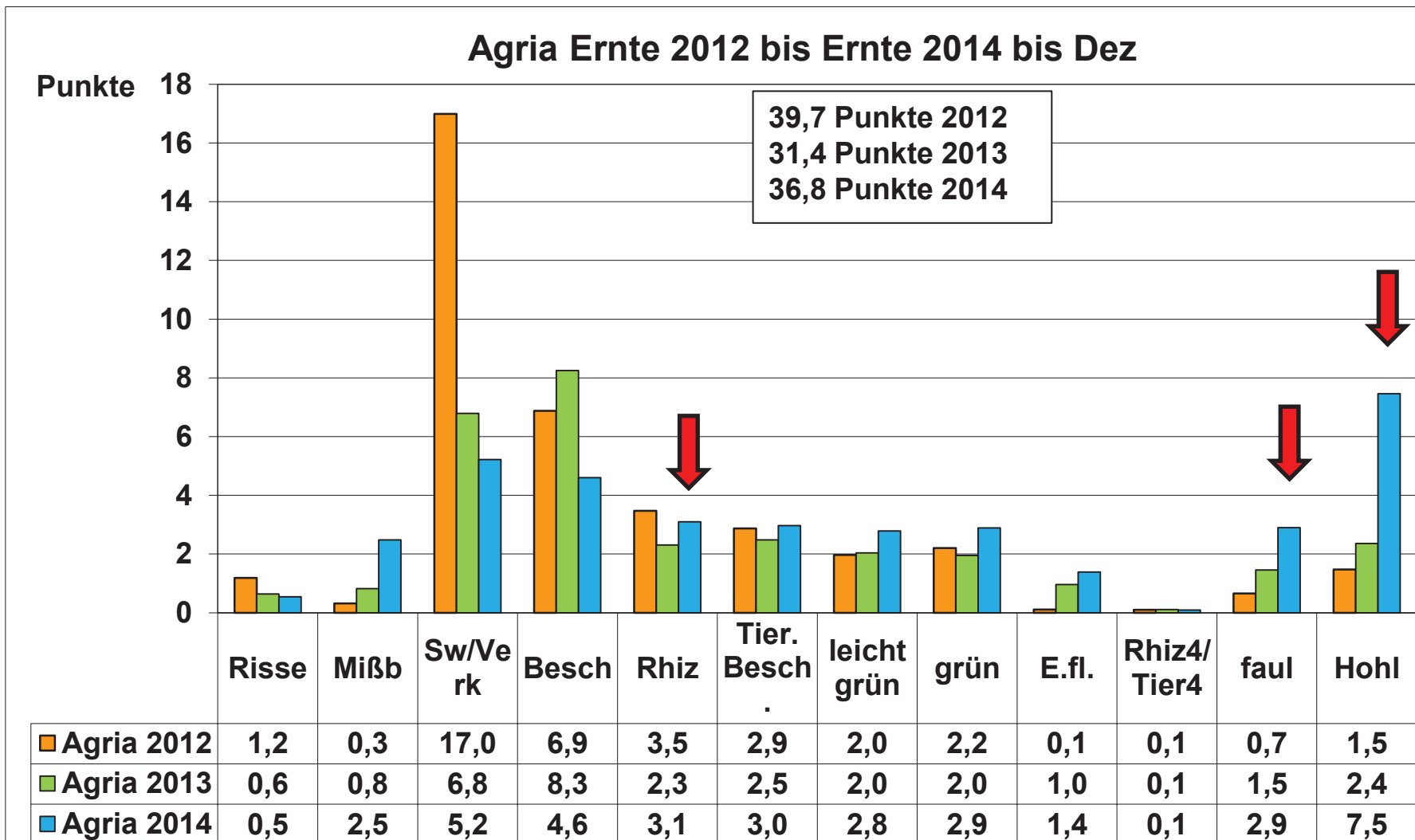
CKA II - Eingang



CKA II - Eingang

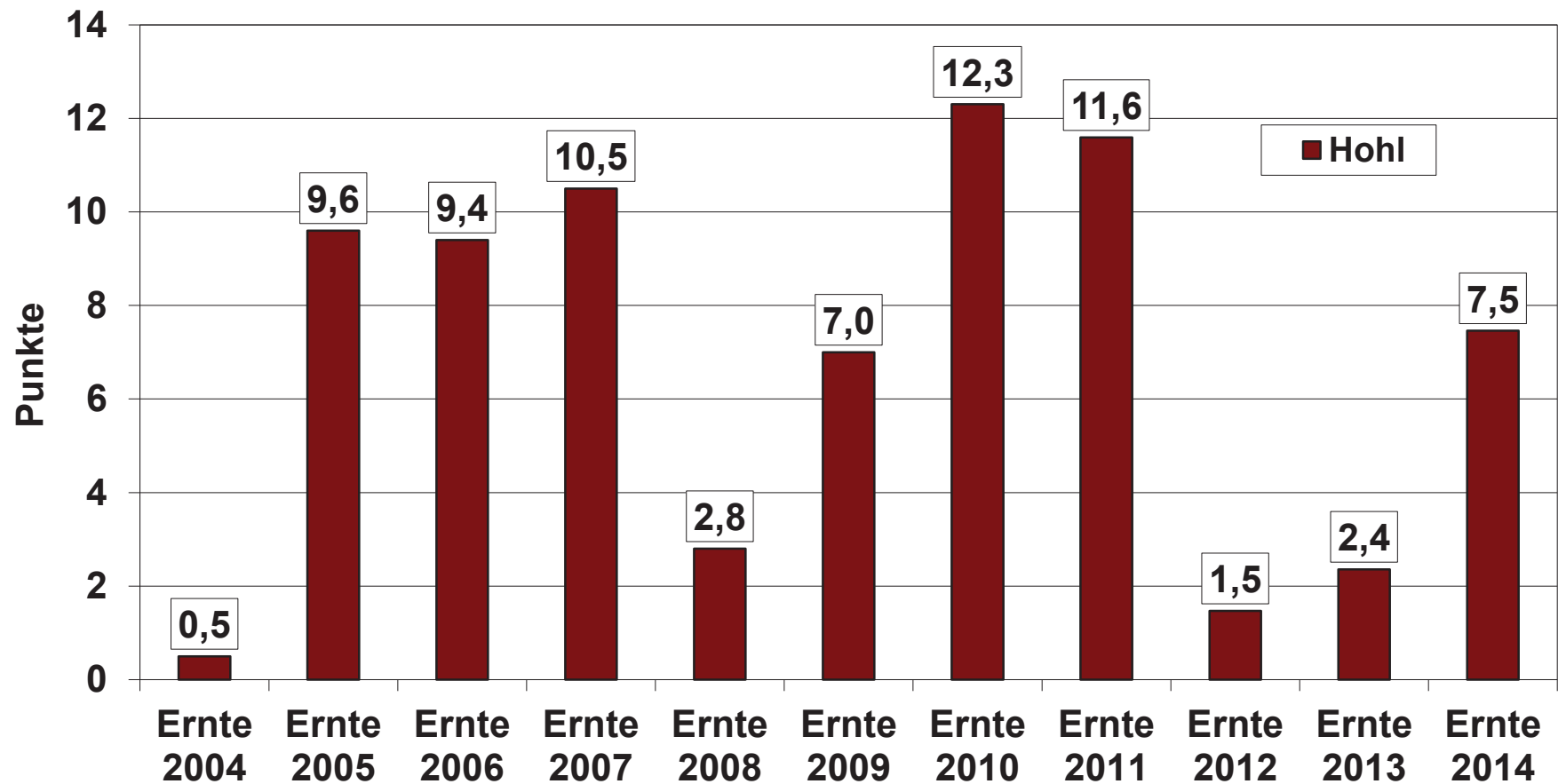


CKA II - Eingang

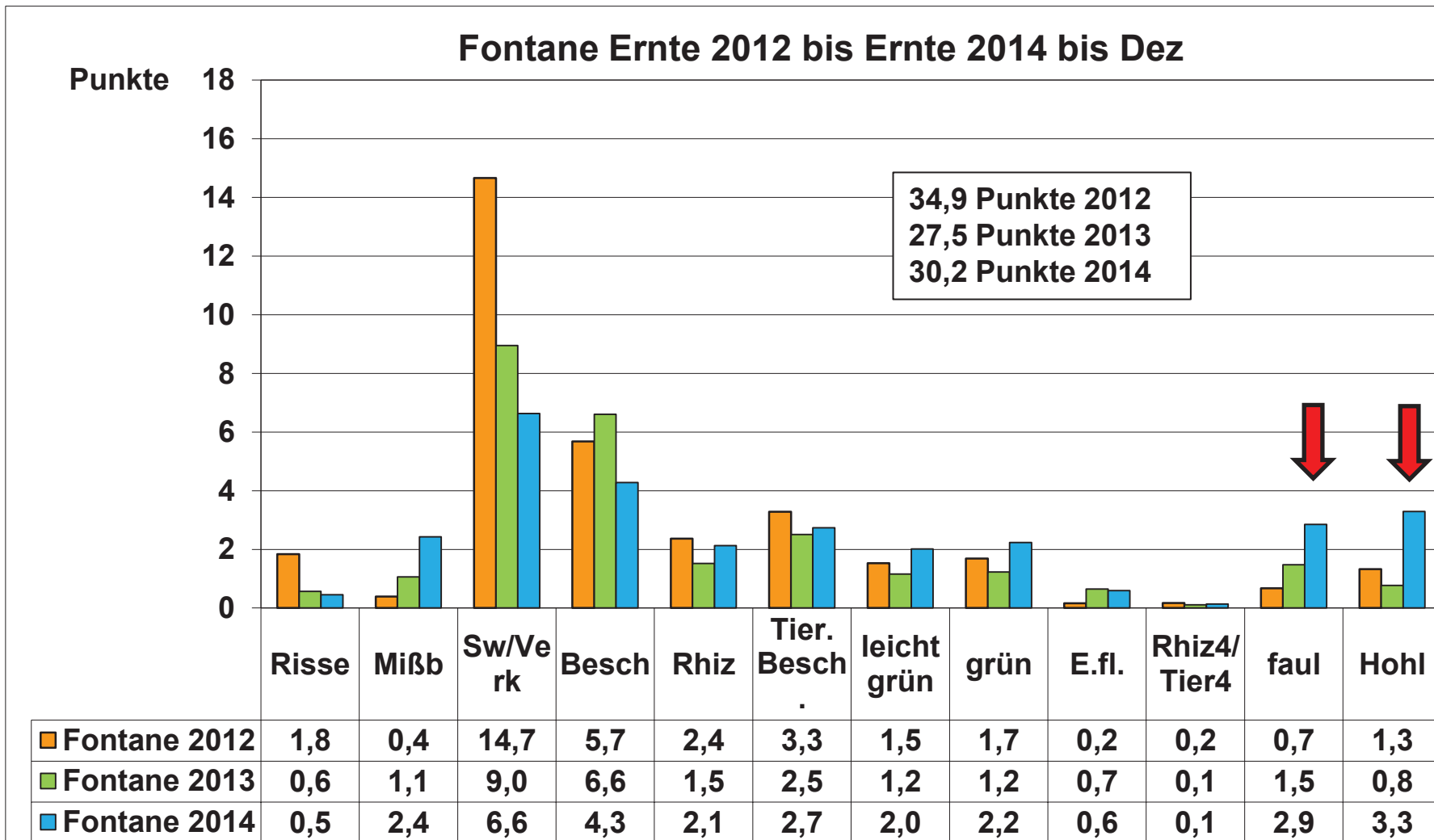


CKA II - Eingang

Mängel bei der Sorte Agria Ernte 2004 bis Ernte 2014

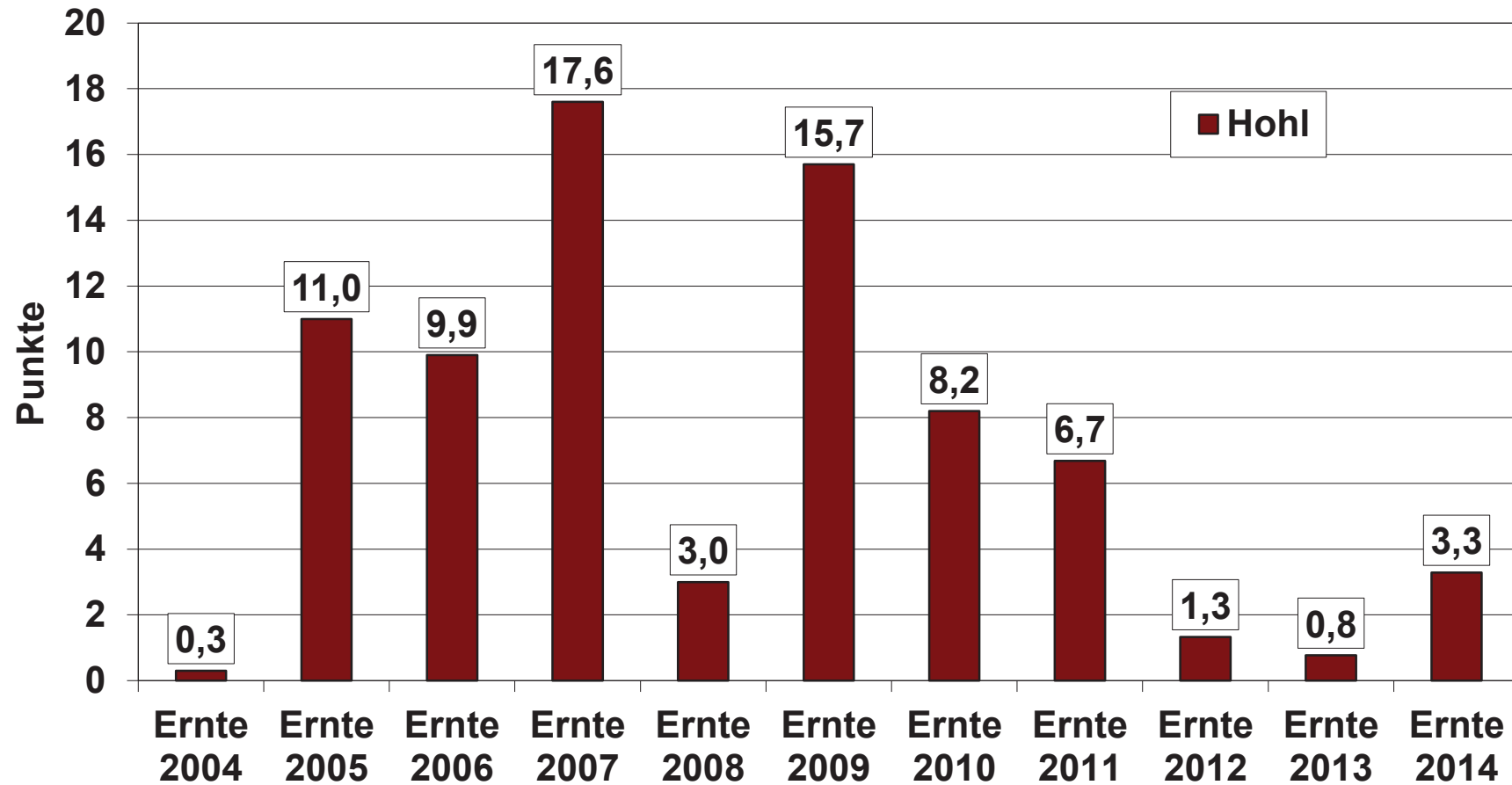


CKA II - Eingang



CKA II - Eingang

Mängel bei der Sorte Fontane Ernte 2004 bis Ernte 2014



Danke
für Ihre
Aufmerksamkeit !

